

FAQ SHEET

DOWNTOWN PORTSMOUTH WATER AND SEWER REHABILITATION PROJECT JULY 2012

What is this project about?

This project involves the installation of new sewer and water lines throughout the Downtown Project Area (see map on back). Customers will be connected to the new system and streets in the project area will have new pavement installed. Also, as part of the construction work, storm water improvements will be made at various locations throughout the project area.

What can residents and businesses expect during construction?

Because much of the work will be in the streets, you can expect some traffic delays and detours during construction. Because of the extensive nature of the construction work, streets and intersections will be closed to vehicular traffic for limited periods of time. You will continue to have pedestrian access to your property although there may be brief blockages while work takes place directly in front of your property to reconnect service. The closures will occur as part of a phased process, and no two major traffic corridors will be closed at the same time in order to facilitate overall area traffic flow. All major work in the closed phase areas will be completed to allow restoration of vehicular access prior to moving to another project phase area. Additional minor restoration work may be required prior to final pavement activities.

Will general emergency/safety/public services be impacted?

Minimally. When roads are closed to vehicular traffic, bulk garbage pickup will not be available, but smaller container pickup will be maintained. There may be the occasional brief period when water and

sewer service is turned off in order to test new lines or switch your service to the new system. **You will be notified in advance when service will be interrupted.** Service interruption will be restored before the contractor leaves for the day. Where road closures occur, public safety/emergency services access will be provided by means of temporary corridors.

Will street parking be available during construction?

No. Normal street parking access will **not** be available when that parking area is part of an active phased construction area (i.e. closed to vehicular traffic) due to construction work. Parking access may be temporarily impacted to complete minor restoration work and final pavement operations. This is expected to be of limited duration, during construction.

When will construction start and how long will it last?

Construction is anticipated to begin in early January 2013 and last approximately 20 to 24 months. Each phase will last approximately 2 to 3 months. The duration of the phases may be changed depending on the extent of storm sewer work that is still under consideration.

When will work take place during the day?

Normal working hours will be limited to 7:30 AM to 5 PM, Monday through Friday. Outside of residential areas, work will be selectively expedited by alternative time periods which may include extended hours, night time work and 24-hour periods. Regardless of working hours, vehicular access to the active phased construction area will not be available

until all major work within that phase is completed.

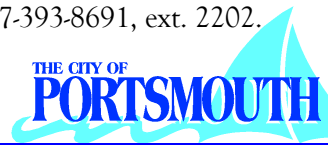
How will we be informed of construction progress?

Property owners will be notified via public meetings, e-mails, newsletters, schedule updates, announcements and videos on public access television (PCTV48). In addition, a project website is available with a link on the Public Utilities webpage at www.portsmouthva.gov/publicutil/. The website will provide detailed project information and alerts.

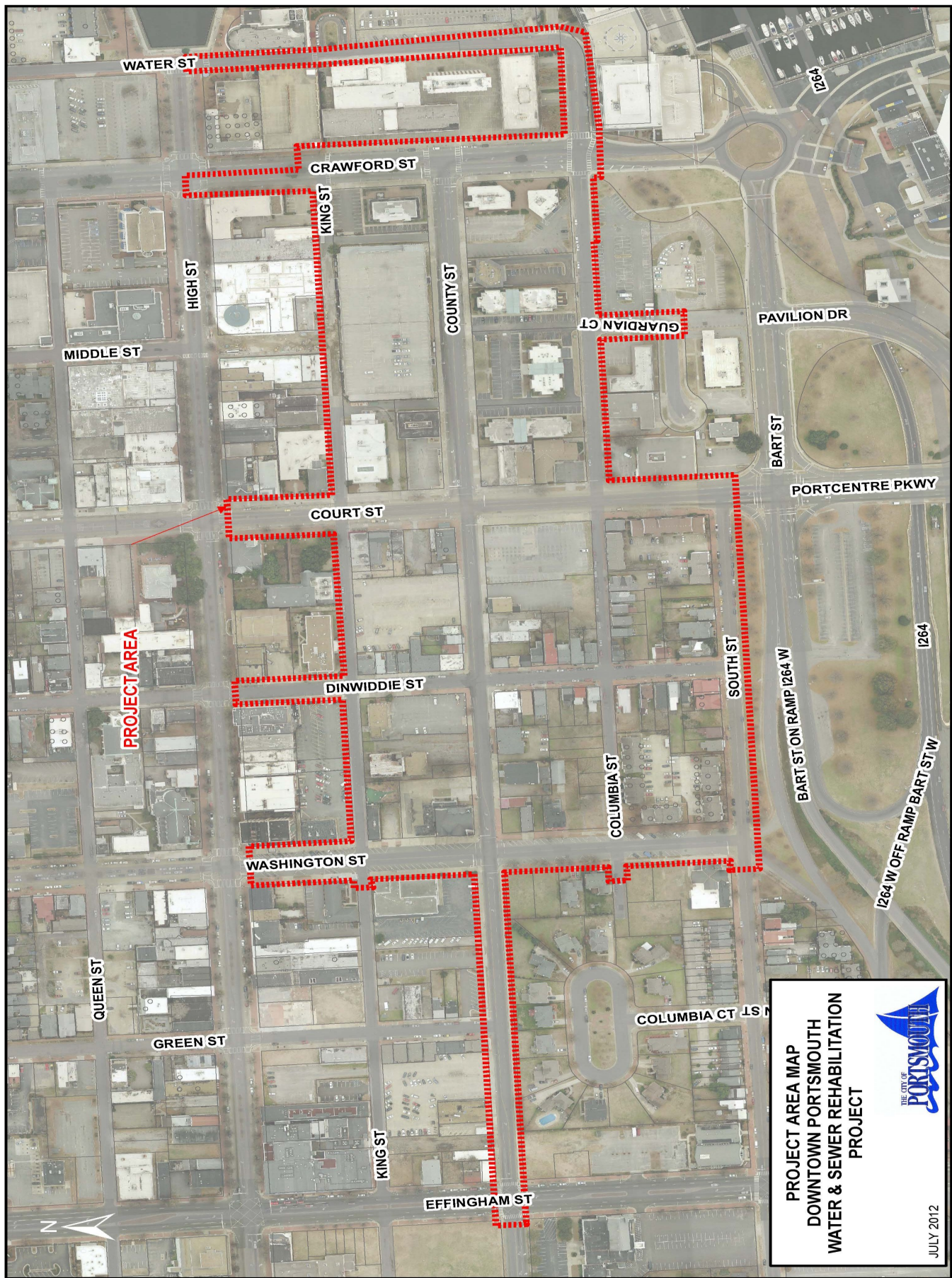
What will the completed project area look like?

Roadway corridors will have brand new pavement and concrete curb and gutters. When disturbed, sidewalks will be restored and in various other locations vegetative areas (called verges) will be constructed to increase the green space within the Downtown area. Improved project area drainage should be experienced as a result of fewer areas of ponding and improved flow to existing/new drainage inlets.

We ask for your patience during this project. The City will have full-time inspection throughout the construction period to ensure the work is done efficiently and disruptions are kept to a minimum. Should you have questions prior to construction contact the City Project Manager, Erin Trimyer, P.E., Assistant Director, Department of Public Utilities, 757-393-8691, ext. 2202.



Department of Public Utilities



PROJECT AREA MAP
 DOWNTOWN PORTSMOUTH
 WATER & SEWER REHABILITATION
 PROJECT

THE CITY OF
PORTSMOUTH

JULY 2012