

DOWNTOWN PORTSMOUTH

Sewer and Water Rehabilitation Project



July 17, 2012

Why is this Project Needed?

- ❖ Strategic redevelopment initiatives targeted infrastructure improvements to meet existing and future demands
 - ❖ Water demand in Downtown Portsmouth is projected to double over the next 25 years
- ❖ Existing system is old, with many components beyond their useful life
 - ❖ 1/3 of the water and sewer lines were installed before 1910
- ❖ Maintenance costs of existing infrastructure are increasing
- ❖ Drainage problem areas exist and need to be addressed

Existing infrastructure needs to be replaced to address worn-out components and provide capacity for redevelopment and revitalization of the Downtown Area



Project Area Information

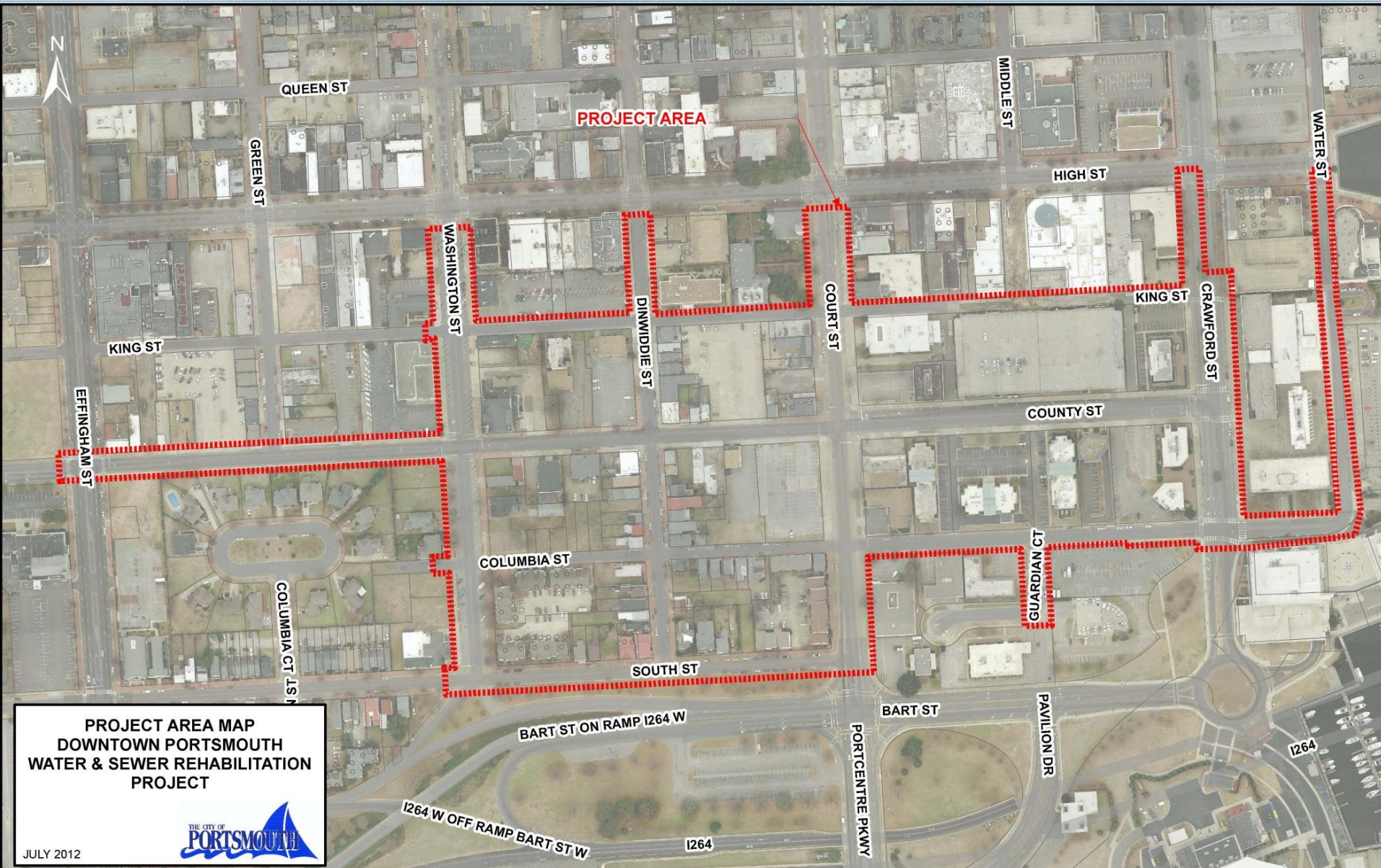
- ❖ **Project Area covers almost 70 acres**
- ❖ **Approximately 250 parcels are located within the Project Area**
- ❖ **Project Area contains 12 streets and almost 3 miles of roadways**



Vicinity Map



Project Area Map



PROJECT AREA MAP
DOWNTOWN PORTSMOUTH
WATER & SEWER REHABILITATION
PROJECT

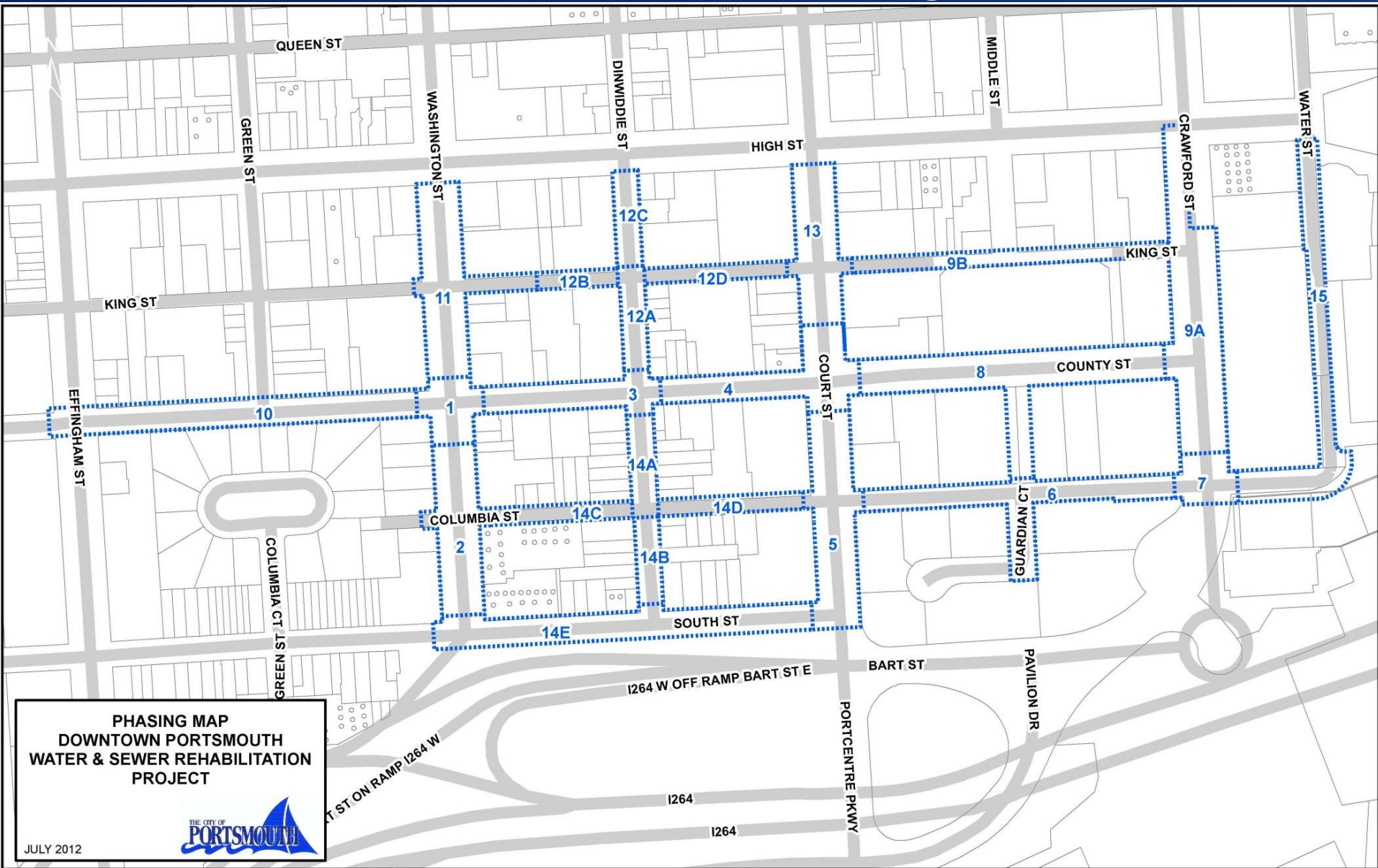


Phasing of Construction

- ❖ Impacts to property owners and traffic flow are the primary project concerns
- ❖ Project is divided into 15 phases to address concerns
- ❖ Phasing limits are currently designed to limit duration of each phase to approximately 2 to 3 months (actual durations will be dependent on the total extent of work currently under consideration for each phase)
- ❖ Work in some phases will be concurrent, but no two major traffic corridors are currently intended to be closed at the same time



Construction Phasing Map



Preliminary Phasing Schedule

Construction Phase	Preliminary Start Date	Approximate Construction Duration
Phase 1	January 2013	1 Month
Phase 2	March 2013	2.5 Months
Phase 3	April 2013	2 Months
Phase 4	May 2013	2 Months
Phase 5	June 2013	3 Months
Phase 6	August 2013	2 Months
Phase 7	September 2013	1 Month
Phase 8	October 2013	2 Months
Phase 9 (A through B)	October 2013	2 Months
Phase 10	January 2013	1.5 Months
Phase 11	December 2013	1.5 Months
Phase 12 (A through D)	December 2013	3 Months
Phase 13	March 2014	1 Month
Phase 14 (A through E)	March 2014	5 Months
Phase 15	April 2014	2 Months

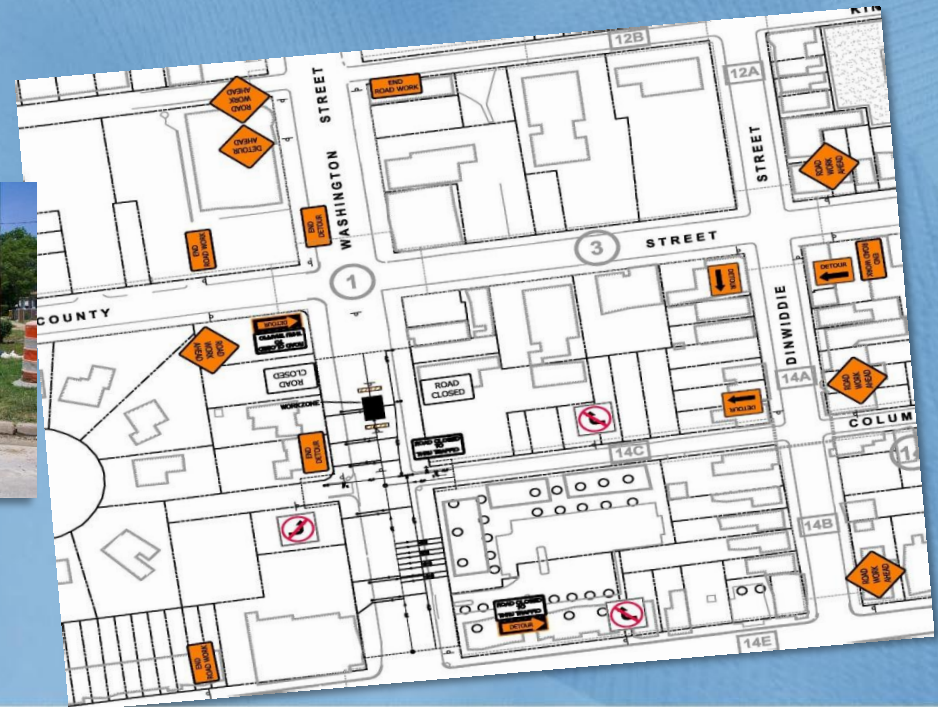
Construction Process

- ❖ All major work within each phase is intended to be completed at one time
- ❖ Work to be performed includes
 - ❖ Installation/rehabilitation of main utility lines (water and sewer)
 - ❖ Replacement/rehabilitation of storm sewer infrastructure to improve overall area drainage
 - ❖ Installation of water service lines and sewer laterals
 - ❖ Installation of new concrete curb and gutter throughout most of the project area
 - ❖ Sidewalk restoration and installation of vegetative areas (i.e. verges) at various locations throughout the project area.
 - ❖ Installation of new asphalt roads



Maintenance of Traffic

- ❖ Full road closures within phase limits
- ❖ Pedestrian access will be maintained
- ❖ Vehicle access to existing parcel entrances will be limited or not available in some cases
- ❖ Normal parking within each phase area will not be available during construction of that phase



Working Hours

- ❖ Normal working hours will be limited to Monday through Friday, 7:30 AM to 5:00 PM
- ❖ Outside of residential areas, work will be selectively expedited by alternative time periods:
 - ❖ Extended hours
 - ❖ Night time work
 - ❖ 24-hour periods
- ❖ Alternative time periods in certain areas will allow the contractor to limit construction durations at important locations



Impact on General Services

❖ Emergency Services

- ❖ Police/Fire/Rescue access will be maintained
- ❖ Pedestrian access will be maintained



❖ Working with HRT regarding bus routes and main pick-up/transfer area on County Street

- ❖ HRT website has customer alerts which identify route modifications

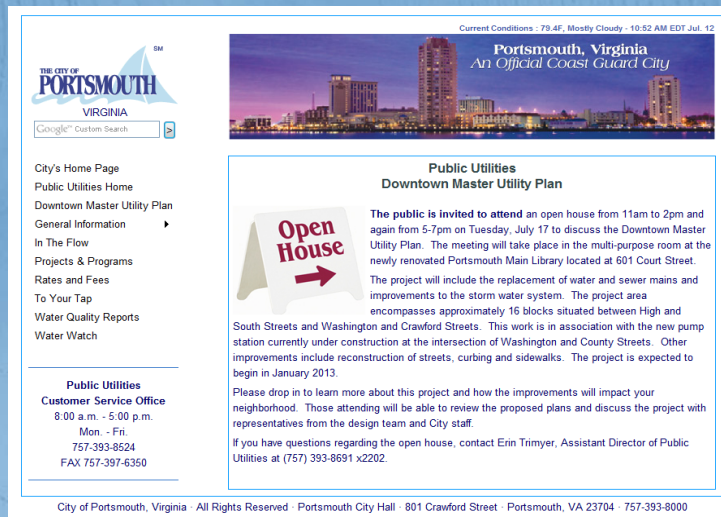


- ❖ Trash pickup, mail, and school bus services will be maintained during construction
- ❖ Interruptions to water and sewer service will be limited during construction and prior notice will be provided
- ❖ Interruptions to other utilities (gas, electric, cable) are not anticipated

Property Owner Notifications

- ❖ Public meetings
- ❖ E-mails with construction updates and other alerts
- ❖ Newsletters with general construction information and schedule updates
- ❖ Announcements or videos on public access television
- ❖ Project Website – Link on the Public Utilities Page

www.portsmouthva.gov/publicutil/



Current Conditions : 79.4F, Mostly Cloudy - 10:52 AM EDT Jul. 12

Portsmouth, Virginia
An Official Coast Guard City

Public Utilities
Downtown Master Utility Plan

Open House

The public is invited to attend an open house from 11am to 2pm and again from 5-7pm on Tuesday, July 17 to discuss the Downtown Master Utility Plan. The meeting will take place in the multi-purpose room at the newly renovated Portsmouth Main Library located at 601 Court Street. The project will include the replacement of water and sewer mains and improvements to the storm water system. The project area encompasses approximately 16 blocks situated between High and South Streets and Washington and Crawford Streets. This work is in association with the new pump station currently under construction at the intersection of Washington and County Streets. Other improvements include reconstruction of streets, curbing and sidewalks. The project is expected to begin in January 2013.

Please drop in to learn more about this project and how the improvements will impact your neighborhood. Those attending will be able to review the proposed plans and discuss the project with representatives from the design team and City staff.

If you have questions regarding the open house, contact Erin Trimyer, Assistant Director of Public Utilities at (757) 393-8691 x2202.

City of Portsmouth, Virginia · All Rights Reserved · Portsmouth City Hall · 801 Crawford Street · Portsmouth, VA 23704 · 757-393-8000



What's Next?

- ❖ **Follow-up meetings with property owners upon request**
- ❖ **Construction is anticipated to start by the beginning of January 2013**
- ❖ **Construction is currently anticipated to be completed in 20 to 24 months**



Project Representation

Primary Contacts

- ❖ Design and Program Management
 - ❖ Draper Aden Associates
 - ❖ Andy Snyder, P.E., Program Manager
 - ❖ ASnyder@daa.com, (757) 599-9800
- ❖ Construction Inspection
 - ❖ Paul Bagdon, Inspector
 - ❖ pdbags@hotmail.com, (757) 469-9552
- ❖ City of Portsmouth
 - ❖ Erin Trimyer, P.E., Assistant Director of Department of Utilities
 - ❖ trimyere@portsmouthva.gov, (757) 393-8691, ext. 2202

